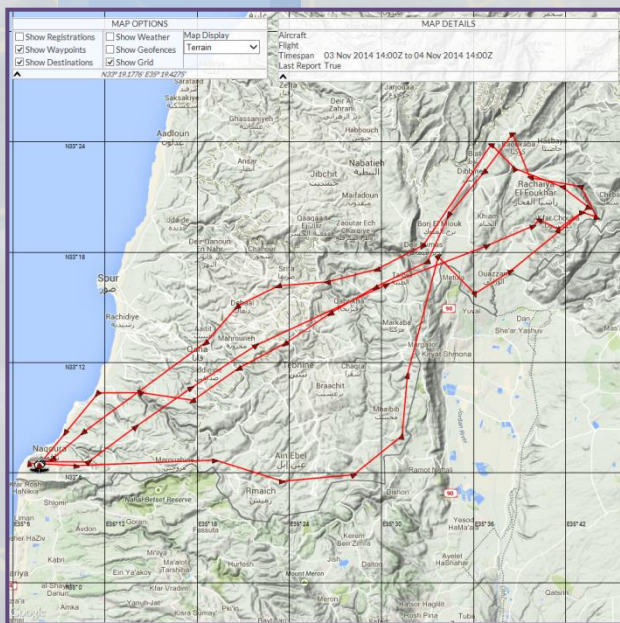
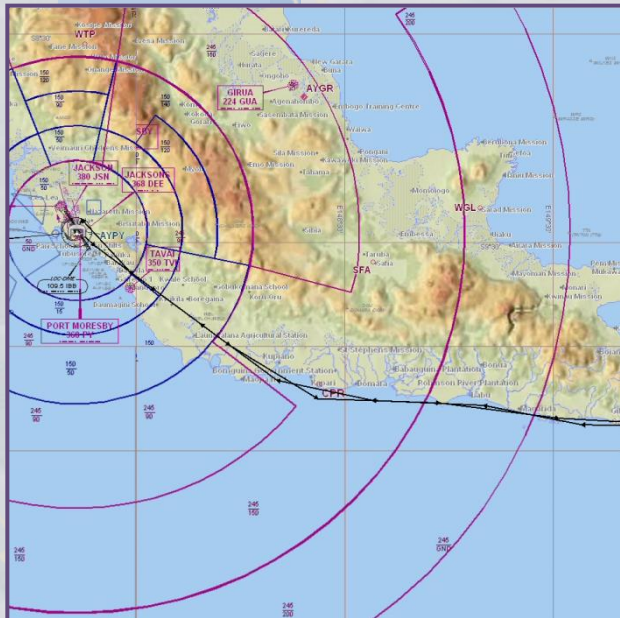


# FALCON



Tracking, communication, operational info and more



The Falcon 360™ from **Apex Flight Operations** is a next-generation flight following system that provides unparalleled aircraft information to operators using the latest available satellite technologies. With worldwide coverage, the Falcon is the ideal solution for low-cost, low-maintenance tracking of aviation assets anywhere over the planet.

## ADVANCED FEATURES

- ➔ Alert button – instantly notifies operations of emergency
- ➔ Configurable for fixed wing or rotor wing flight types
- ➔ Built-in awareness of the phase of flight
- ➔ Remote safety monitoring with Abnormal Power Loss detection
- ➔ Full GPS data per report with zero dilution of accuracy
- ➔ Operational event notification: Avionics On/Off, Engine On/Off, Taxi Start/Stop, Takeoff/Landing
- ➔ Change of course or altitude warning (in cruise phase)
- ➔ Rate-Of-Ascent/Descent exceedence warnings
- ➔ Weight & Balance, ECTM, Flight Folio, Medical and more
- ➔ Geofence and airspace warnings
- ➔ Wi-Fi (802.11a/b/g/n) and Bluetooth LE connectivity
- ➔ Full function software for iOS, Android and Windows
- ➔ Bi-directional communication via Smart Device/Laptop
- ➔ Email capability with no restriction on message size
- ➔ Completely portable and stand-alone
- ➔ External Power plug plus internal battery\*
- ➔ Flight data recording – includes built-in accelerometer

## NO INSTALLATION

The Falcon is completely portable, requires no special installation and is immediately operational – just plug it in to a standard power socket, and it's ready to go.

## EXCELLENT VALUE

The Falcon offers the best value for money when compared with leading competitors, and has the lowest-priced airtime charges available at only 3½ cents per report.

## WINDOWS, iOS, ANDROID SOFTWARE

The Falcon integrates with the Falcon Crew app for Windows CE, iOS and Android for easy communication to and from the cockpit using DirectText, SMS or Email (with attachments). Falcon Crew also features configuration, weight-&-balance, flight folio, medical info, custom markers, data download and ECTM data gathering templates.

### Performance

Max Speed	600 kts
Max Ceiling	65k feet
Min Interval	10s
Avg Latency	< 15s

### GPS

Acquisition Time	27 s cold worldwide
GPS Channels	16
Accuracy	2.5 m (Horizontal CEP)

### Electrical

Power Supply	+11 to 33 V <sub>dc</sub>
--------------	---------------------------

### Communication

BlueTooth	4.0
Wi-Fi	802.11a/b/g/n
Message Size	Unlimited

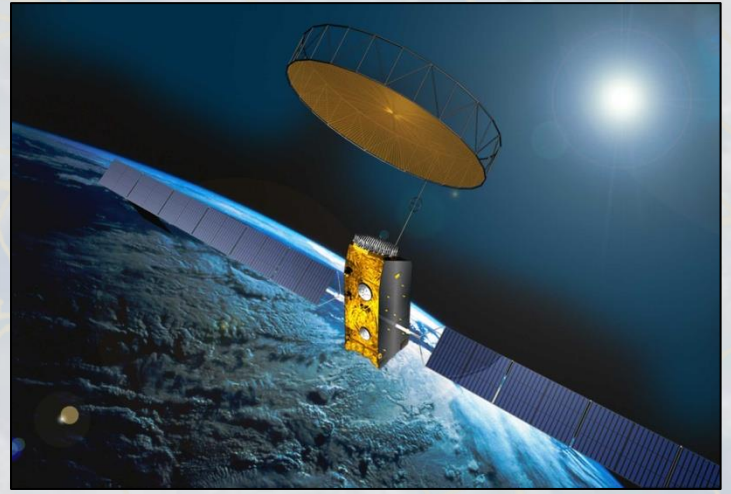
### Certification

Satellite	Inmarsat Type Approved
Other	FCC, CE, RTCA DO-160G

\* Internal battery used for housekeeping only

## RELIABLE TECHNOLOGY

The Falcon uses the latest IsatData Pro satellite technology from Inmarsat and Orbcomm to deliver class-leading cost, performance, capacity and functionality. All communication has near real-time latency and guaranteed delivery, ensuring you are always in touch with your aircrew and always know where the aircraft is.



*Inmarsat I4 satellite in orbit over Pacific Ocean*

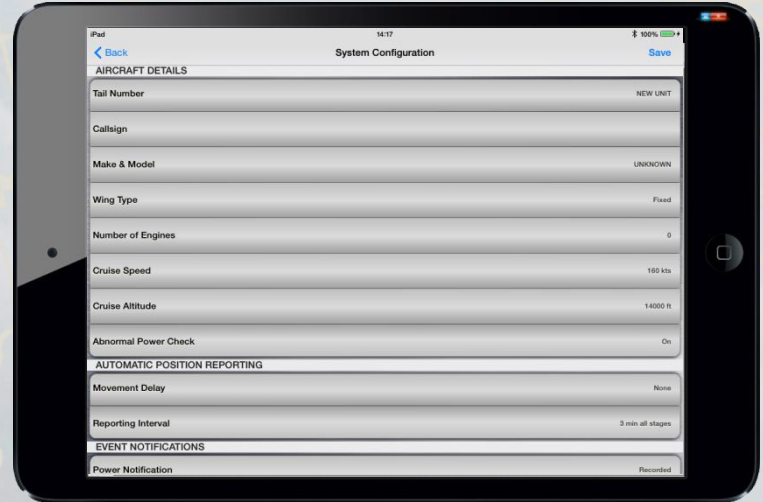
## INTELLIGENT DATA GATHERING

Advanced smart-logic built into the Falcon allows it to monitor the phase of flight of the aircraft, and report accordingly – the unit can be configured to report at different intervals based on the phase of flight, delivering safety oversight whilst still being extremely cost-effective. The Falcon automatically reports exact times, events and locations for each of the following:

FIXED WING AIRCRAFT	ROTOR WING AIRCRAFT
Avionics Time	Avionics Time
Engine Time	Engine Time
Block/Taxi Time	Flight Time
Flight Time	Hover Time

## ADVANCED FUNCTIONALITY

The built-in battery ensures that you never lose communication, even after the aircraft is shut down. An internal recorder stores second-by-second data for every flight, and a 3-axis accelerometer reports all g-forces experienced during operation. The Falcon's flexibility allows you to customize operational reporting from your aircraft, delivering all the flight information you need whilst keeping costs extremely low.



*Falcon Crew iOS screenshot*

## AUTOMATED FLIGHT FOLLOWING COMPLIANT

The Falcon is AFF compliant, as well as meeting the requirements of United Nations, ICRC, NAFC and other agencies requiring AFF standards.

For pricing, fleet discounts or more information contact [info@apexflightops.com](mailto:info@apexflightops.com), call +61 2 8003 5987 or visit our website to find a distributor in your region